

## THE 1912 "WIDE TRACK"

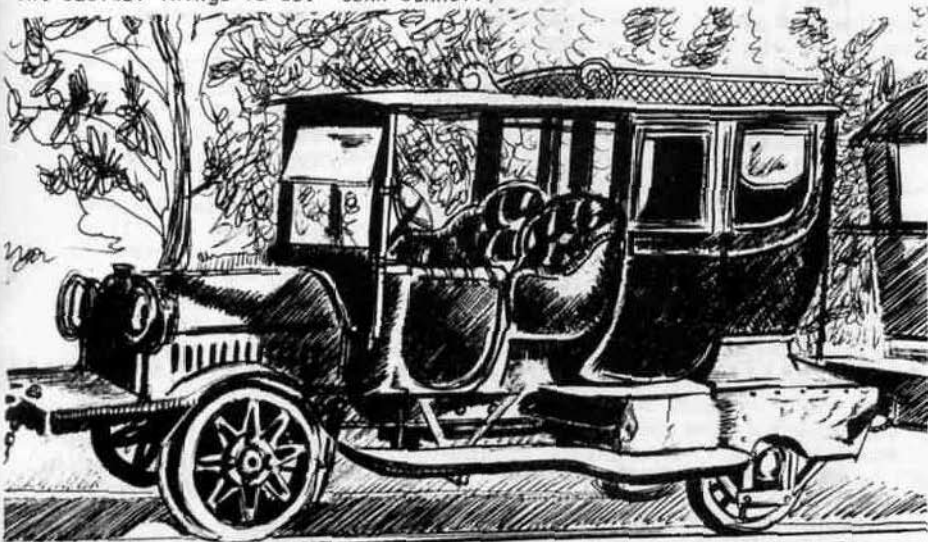
Story by Anders Willgard  
(as related to John Gunnell)

Believe it or not, the rather weird-looking combination illustrated here is not one of my early surrealist paintings. It is, in fact, a drawing of a 1912 Oakland that was pressed into service in a unique fashion many years ago. According to my friend Anders Willgard, who lives in Vallingby, Sweden, the Oakland was rebuilt in 1922 into this railcar. It was used at a little railway in the middle of Sweden. The carriage was built for King Charles the XV and used for hunting. The carriage still exists but the Oakland railcar conversion has long since disappeared.

This drawing is taken from a photograph on a calendar that was sent to me by Anders. Anders has a 1953 Chieftain exactly like my own except that his is in much nicer condition. It was on the cover of the December issue of *Smoke Signals*. His second Pontiac, a 1962 Tempest Safari, appeared in the following issue before a recent repaint. He now tells me he has tracked down a 1954 Starchief convertible, too. Pretty soon he will have the best collection of Pontiacs around.

I want to thank Anders for this rare bit of Oakland history. I just wish the New York subway cars looked this good!!

(Anders and I have been corresponding since long before my *Smoke Signal* days. Making friends is one of the best things about our club and one of the easiest things to do. John Gunnell)



John Gunnell 1976